

E Ho'omākaukau i ka Lako Kūola

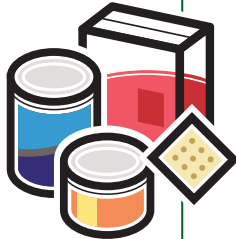
1 KA WAI

- E ho'omākaukau i ka wai no ka 'inu 'ana a i 'ole ka ho'oma'ema'e 'ana no ka po'e a pau e noho pū ana ma ka hale like. I lawa ana i ka wai no 'ehiku lā a 'oi. E mālama i ho'okahi kālani o ka wai no ho'okahi kanaka no ho'okahi lā.



2 KA MEA'AI

- E lako ana ka po'e a pau i ka mea'ai pilau 'ole no 'ehiku lā.
- E lako ana ka pēpē i ka waiū a me nā 'ōmole waiū no 'ehiku lā a 'oi.
- He lako ko'iko'i ka mea wehe kini i mea e hemo ai nā kini me ka mea'ai i loko.



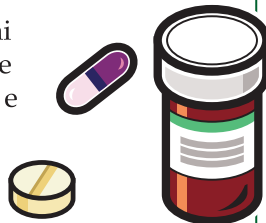
3 KA LEKIO

- E mālama i ka lekio iho pihi, a i 'ole ka lekio wili lima, a me ka lekio anilā NOAA. E mālama pū ana i nā iho pihi i lawa ana ka 'uila i mea e ho'okani ai nā lekio no 'ehiku lā.



4 KA LĀ'AU KUHIKUHI

- E lako ana i nā lā'au kuhikuhi e pono ai ka po'e pono'i, a me nā makaaniani i kuhikuhi 'ia e ke kauka maka.



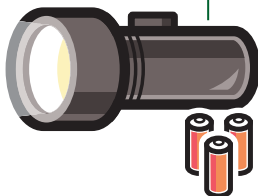
5 KA LOLE

- E mālama i ka lole kūpono no ka po'e a pau o ka hale: 'O nā lole ko'iko'i 'o mālama 'ana aku, 'o ia ka palule me nā lima lō'ihi, ka lole wāwae lō'ihi a me nā kama'a pa'a.
- E lako ana ka po'e pākahi i ke kapa moe nui a i 'ole ka 'eke moe.



6 KE KUKUI HELE PŌ

- E lawa ana i nā kukui hele pō no ka po'e a pau ma ka hale.
- E mālama ana i nā iho pihi no nā kukui hele pō i lawa ana ka 'aulama no 'ehiku pō.
- E lako ana i ka hōkio e ho'ō ana i mea e kāhea ai ka mea kōkua.
- E lako ana i ke keleponahele a me ka mikini ho'oikehu na ke kelepona.
- E ho'omākaukau ana i ka mikini ikehu lā inā pio ka 'uila ma ka hale.



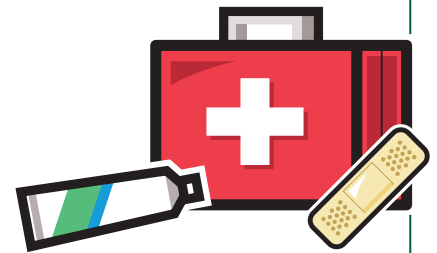
7 NĀ LAKO HO'OMA'EMA'E KINO

- E lako ana i ke pani wai'ula a me nā pale wai'ula na ka wahine.
- E mālama ana i ka lako e pono ai ka ho'oma'ema'e 'ana: 'o ka palaki niho a me ka pauka niho, ke kopa, ka pepa hāleu, ka lūkini pō'ae'ae a me nā mea 'ē a'e e pono ai ke kino ma'ema'e.
- E lawa ana ka pēpē i nā kaiapa.



8 KA HŌKEU KŪOLA

- E ho'omākaukau i kekahi hōkeu kūola ke hō'ino 'ia ke kanaka
- E lako ana i nā kāweleiki i ho'opulu'ia i mea e hōloi ai ke kino.
- E mālama i nā 'eke 'ōpala, a me nā kaula hō'ope no nā 'eke i mea e ma'ema'e ai ka wahi nohona a me ke kino o ke kanaka.



9 KE KĀLĀ

- E ho'omākaukau i ka pū'ulu kālā me ke kenikeni a i 'ole ka pepa kīko'o holoholo no ke kū'ai 'ana aku.



10 KA MEA'AI NA KA HOLOHOLONA HĀNAI Ā HUHU

- E lako ana i ka mea'ai a me ka wai no nā holoholona hānai ā huhu no 'ehiku lā a 'oi.

